



Discover HAGI Tours Tour Collection '26-'27

Discover Hagi, Japan,
where the samurai lived, stayed, and traveled





All Tours

Featured Day Tours

Note:
Prices shown are for group tours.
Please contact us for private tour rates.

Most popular!! Hagi Samurai Town Cycling



Our signature tour offers a refined and authentic journey through Japan. Explore the vast UNESCO World Heritage castle town of Hagi, once home to samurai, on a 12 km e-bike ride, surrounded by timeless scenery and culture.



Price: ¥12,100 per guest
Duration: 3.5 hours
Start Time: 8:30 am / 1:00 pm

Hagi Samurai Post Town Walk with Local Lunch



Discover a historic post town once used by traveling samurai, known for its rare red tile roofs. Take a relaxed 2 km walk through beautiful countryside scenery, followed by a locally sourced lunch in a traditional Japanese house.



Price: ¥12,100 per guest
Duration: 3.5 hours
Start Time: 8:30 am

Hagi-Okan Samurai Trail E-Bike Adventure



Ride along the historic Hagi-Okan, a mountain trail once traveled by samurai. Enjoy 4 hours of riding through stone paths, forest trails, and red-roofed villages. E-bikes ensure a comfortable experience suitable for most fitness levels.



Price: ¥26,400 per guest
Duration: 5 hours
Start Time: 8:00 am

Hagi Heritage Walk



Discover Hagi's UNESCO-listed Samurai Town and temple district on a relaxed 2.5 km walk. Visit local shops along the way - perfect for families with children.



Price: ¥11,000 per guest
Duration: 3.5 hours
Start Time: 8:30 am / 1:00 pm

Karst Landscape E-Bike Journey



A specially permitted e-bike tour to explore Japan's largest karst plateau, "Akiyoshidai," a UNESCO Global Geopark. Ride across grasslands dotted with limestone formations—an otherworldly, truly unique experience.



Price: ¥19,700 per guest
Duration: 4 hours
Start Time: 8:30 am

Mt. Kasayama Volcano Trail Walk



Walk along the trail of Mt. Kasayama, a small active volcano that last erupted 8,800 years ago, and safely approach its crater at the end. On this 2 hour walk, enjoy subtropical vegetation, coastal scenery, and panoramic island views from the summit.



Price: ¥15,400 per guest
Duration: 4 hours
Start Time: 8:30 am

Hagi-yaki Ware Pottery Making Experience



Price: ¥9,900 per guest
Duration: 2.5 hours

Soy Sauce Culture Walk & Tasting with Lunch



Price: ¥16,500 per guest
Duration: 4.5 hours

Sasanami Tofu Making Experience with Tofu Lunch



Price: ¥13,200 per guest
Duration: 4 hours

Custom Tour Ideas

Sample Itinerary 1 Hagi Ultimate Experience (3D/2N)



The most popular package, featuring 3 activities that offer an authentic Japanese experience.

- Samurai Town Cycling
- Hagi Heritage Walk
- Samurai Post Town Walk with Local Lunch

Day 1

Samurai Town Cycling



Day 2

Hagi Heritage Walk



Day 3

Samurai Post Town Walk



Sample Itinerary 2 Hagi Samurai Trails Adventure (3D/2N)



A signature 3-day adventure featuring e-bike rides and walks through Hagi's historic samurai landscapes.

- Samurai Town Cycling
- Hagi-Okan Samurai Trail E-Bike Adventure
- Samurai Post Town Walk with Local Lunch

Day 1

Samurai Town Cycling



Day 2

Samurai Trail E-bike Adventure



Day 3

Samurai Post Town Walk





Sample Itinerary 3 Hagi Heritage & Nature Experience (3D2N)



Effortlessly explore a region where history and nature come together on an e-bike adventure, riding through a UNESCO World Heritage site, a UNESCO Global Geopark, and protected historic trails.

- Samurai Trail E-bike Adventure
- Samurai Town Cycling
- Karst Landscape E-Bike Journey

Day 1

Samurai Trail E-bike Adventure



Day 2

Samurai Town Cycling



Day 3

Karst Landscape E-Bike Journey



Sample Itinerary 4 Soy Sauce Heritage Experience (3D2N)



A soy sauce - themed journey with a brewery tour, soy-based lunch, and tofu-making experience - plus a stay in a hotel with roots in a historic soy sauce brewery.

- Samurai Town Cycling
- Soy Sauce Culture Walk & Tasting with Lunch
- Sasanami Tofu Making Experience with Tofu Lunch
- Stay at Soy Sauce Heritage Hotel (opening in fall 2026)

Day 1

Samurai Town Cycling



Day 2

Soy Sauce Culture Walk & Tasting



Day 3

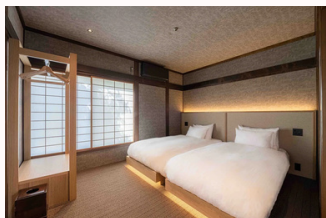
Sasanami Tofu Making Experience



Accommodations

We partner only with safe and high-quality accommodations. As these properties actively welcome international guests, you can enjoy your stay with peace of mind.

Ryokan



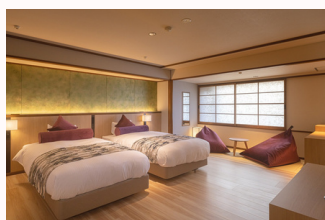
Tomoe Ryokan

Price (approx.): ¥40,000

Room Capacity: 1–4 Guests

*Price per guest

Onsen Hotel



Hagi Honjin

Price (approx.): ¥30,000

Room Capacity: 1–3 Guests

*Price per guest

Budget Hotel



Hagi Royal
Intelligent Hotel

Price (approx.): ¥10,000

Room Capacity: 1–3 Guests

*Price per guest

Soy Sauce Heritage Hotel *Opening in autumn 2026

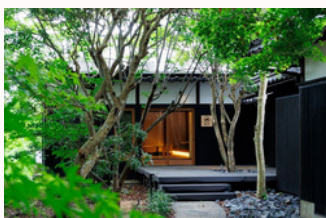


Price (approx.): ¥30,000

Room Capacity: 1–2 Guests

*Price per guest

Private stay in a traditional Japanese house



Price (approx.): ¥35,000

Capacity: 1–4 Guests

*Price per group

About Hagi

Hagi is a rare destination where a 400-year-old castle town, part of a UNESCO World Heritage Site, remains beautifully preserved. Visitors can experience authentic Japanese culture, samurai districts, and scenic countryside - all without the crowds. It is a place where history, nature, and daily life remain closely connected.



About Discover HAGI Tours

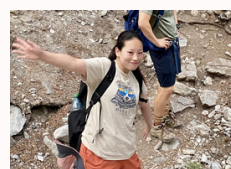
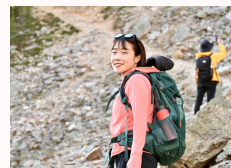
We introduce visitors to the authentic landscapes and everyday life of rural Japan, beyond major tourist destinations.

In Hagi - where history, nature, and daily life remain closely connected - we offer relaxed tours that deepen your understanding of the region. Discover a side of Japan that guidebooks rarely show.



Our Guides

Our guides are locals who live in the Hagi area, and all have experience living abroad. With their deep knowledge of the region and international perspective, we offer truly authentic and memorable experiences.



Hagi Tourist Information Center

Discover HAGI Tours operates “Hagi Tourist Information Center” officially registered with the Japan National Tourism Organization (JNTO), offering free tourist information in English.

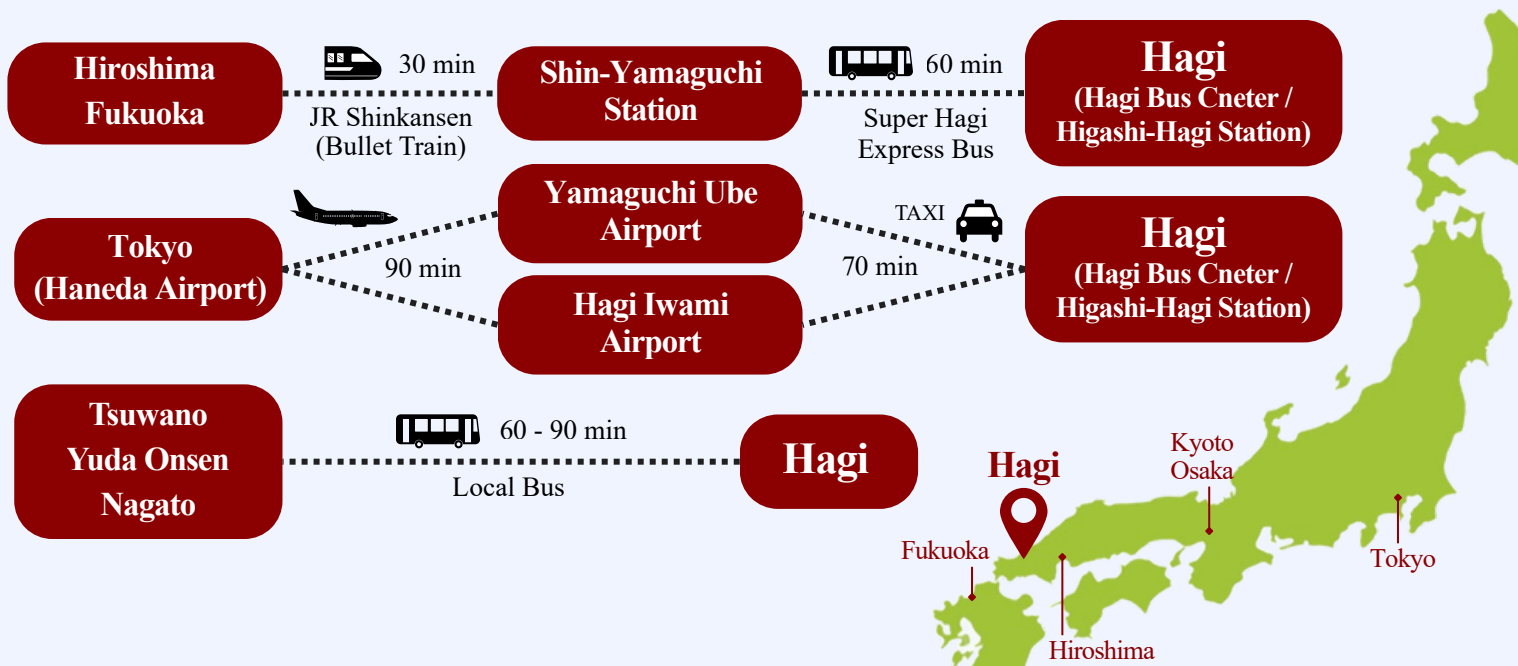
Conveniently located next to the Hagi Bus Center - the city’s main transportation hub. The center also serves as the meeting and departure point for our tours.



Access

Extend your stay in Japan by just a few days and discover Hagi - where you can experience the authentic side of Japan.

Located just 1.5 hours from Hiroshima and Fukuoka by Shinkansen and bus, Hagi is easily accessible. Two nearby airports also offer convenient flights to Tokyo.



Discover HAGI Tours
10 Karahimachi, Hagi City, Yamaguchi JAPAN 758-0044

Website: <https://discoverhagi.com>
E-mail: info@discoverhagi.com

